



Packaging Instructions

For
Continuous Passive Motion Machine

Manufactured by:
Kinetec ®
Charleville-Mezires
France

Distributed by:
CPM Knee Hire
Stockport
England

Performa Packaging

IMPORTANT : If you don't follow these instructions the machine will not fit into the box.

The Performa Unboxing video on the "Our Machines" page of our website <https://www.cpmkneehire.co.uk/our-machines.html> may be helpful if you are having difficulty with the instructions below.

1. Before beginning to dismantle machine use the hand control to drive the cradle to the red arrow stuck to the side of the base. A value of -3 on the keypad should achieve this.



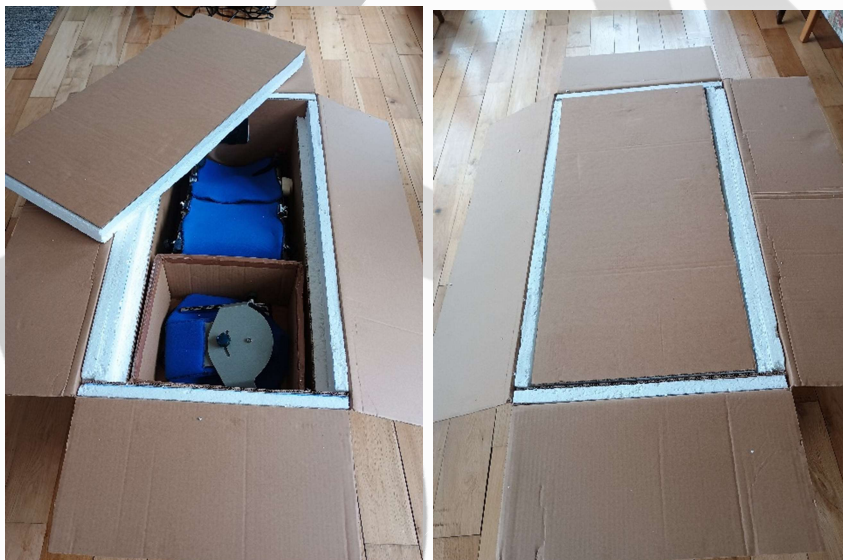
2. Switch the machine off and remove the mains lead.
3. Release the yellow knobs and remove the footplate
4. Fold the arms of the footplate (to reduce its size) using the blue knobs.
5. Using the red knobs release the thigh bar, tilt the cradle to the upright position then move the thigh bar to the centre of the base.
6. Wrap the hand control in bubble wrap and place on the base as shown.



7. Lower the cradle back down and secure it to the base using the Velcro strap. Thus secured it will be much easier to lift the machine back into the box.



8. When the machine is back in the box, place the manuals, the power cord and the foot plate into the small accessory box and place it on top of the machine.
9. Place the packing insert over the whole machine and tape the box up.



10. Telephone 0161 327 4109 to arrange collection.